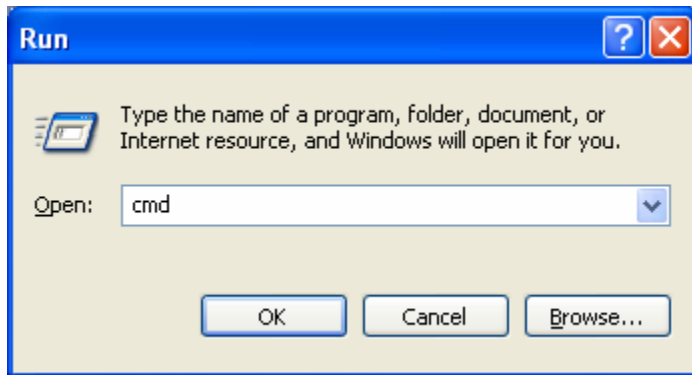


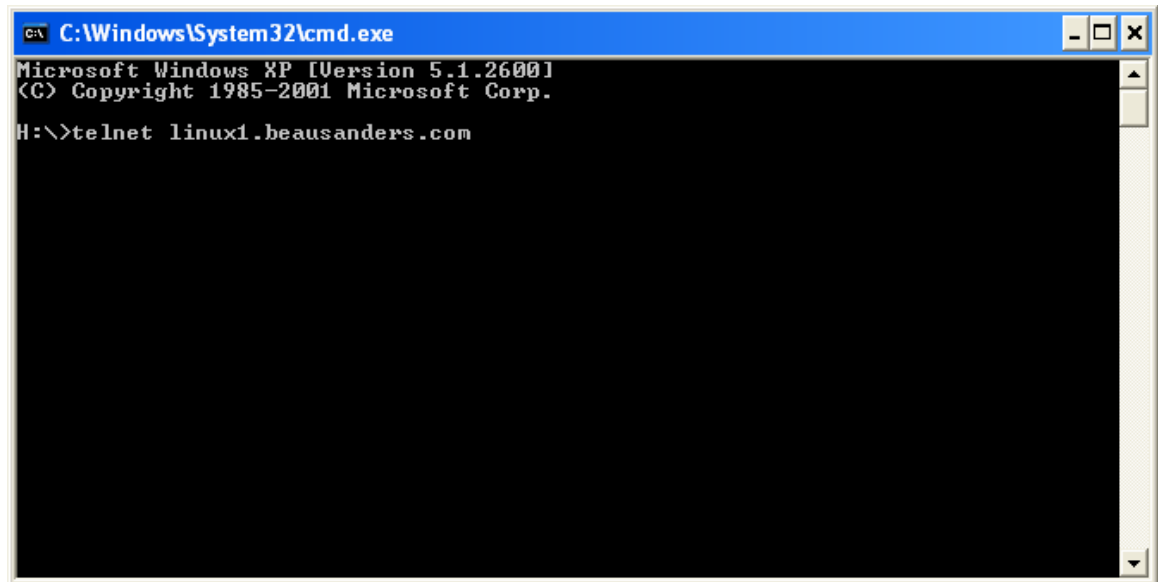
How To Use Telnet Client

The following instructions are designed to help students log in to the Linux Student Server using Microsoft Windows Telnet client. This process can also be followed using the Linux Telnet client, as well as various other Telnet clients available.

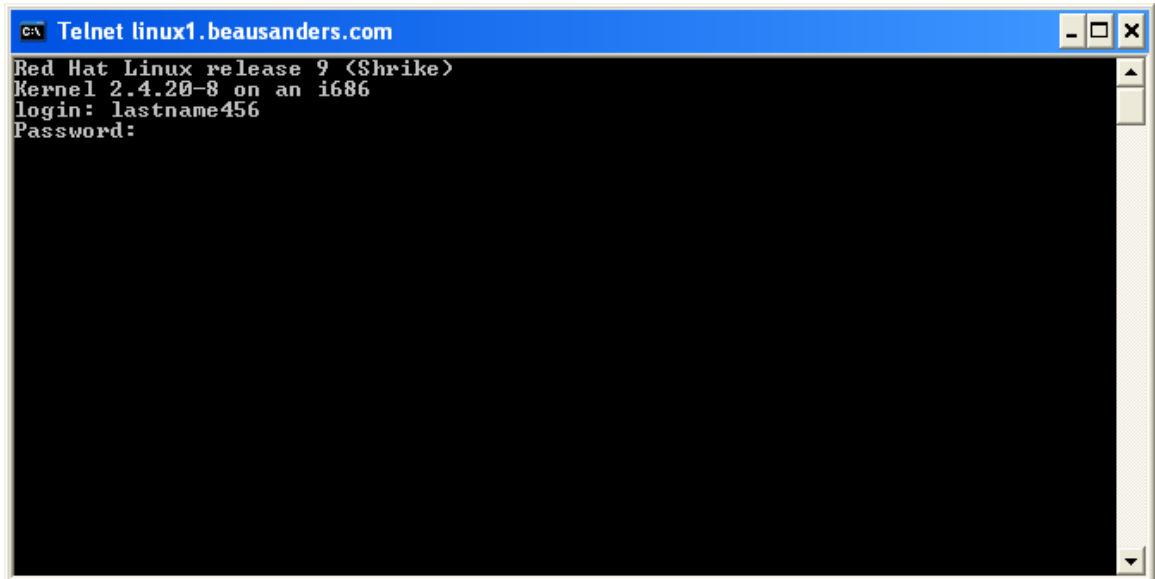
1. Access Microsoft's Telnet Client in Windows from the command prompt. First click the Start button, then click Run, enter **cmd**, and click OK.



2. At the command prompt, enter **telnet linux1.beausanders.com**

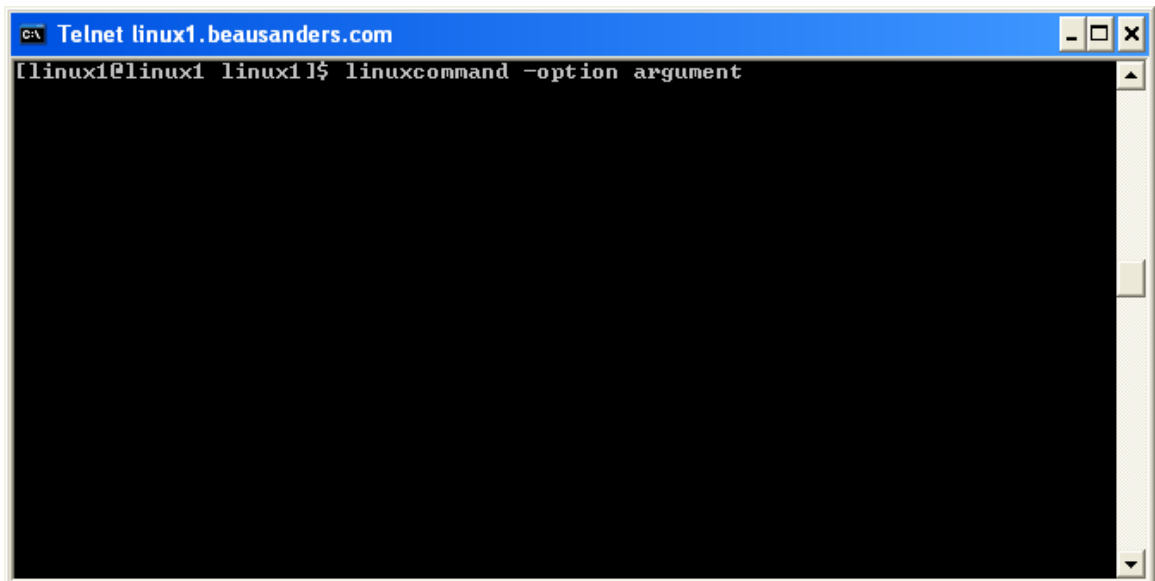


3. Now login to the Linux Student Server by enters your User ID and password. Ask your instructor for a user account if you do not have one.



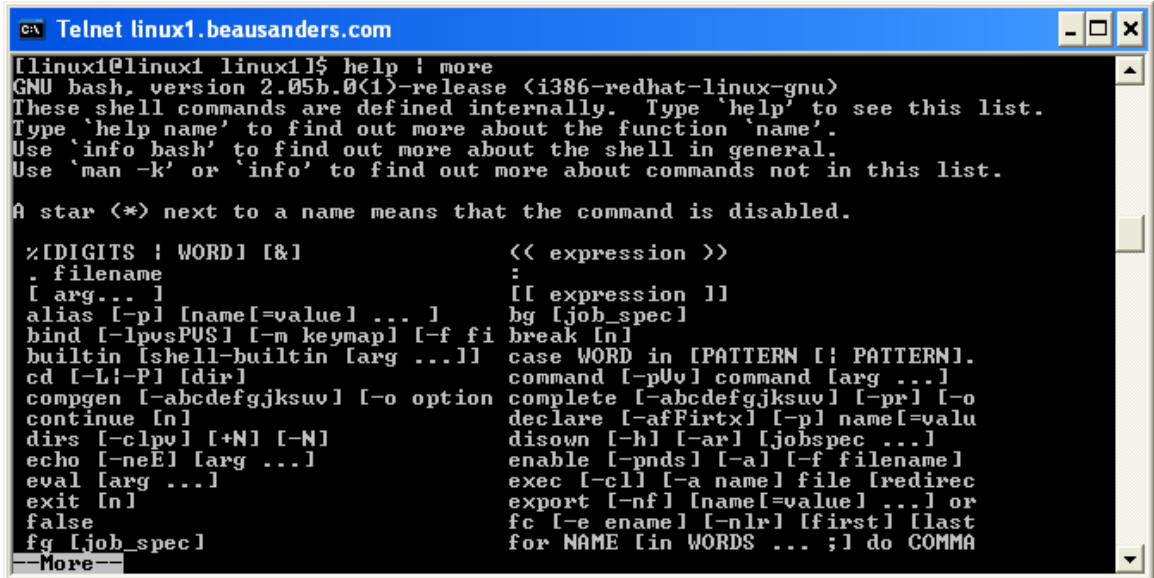
```
c:\ Telnet linux1.beausanders.com
Red Hat Linux release 9 (Shrike)
Kernel 2.4.20-8 on an i686
login: lastname456
Password:
```

4. Once you are at the server's command prompt you can begin using any Linux command just like you would locally on a Linux computer. Remember the correct command syntax for Linux: **command -option argument**



```
c:\ Telnet linux1.beausanders.com
[linux1@linux1 linux1]$ linuxcommand -option argument
```

5. If you need some help, use the man or info pages in Linux, or enter **help** | **more**



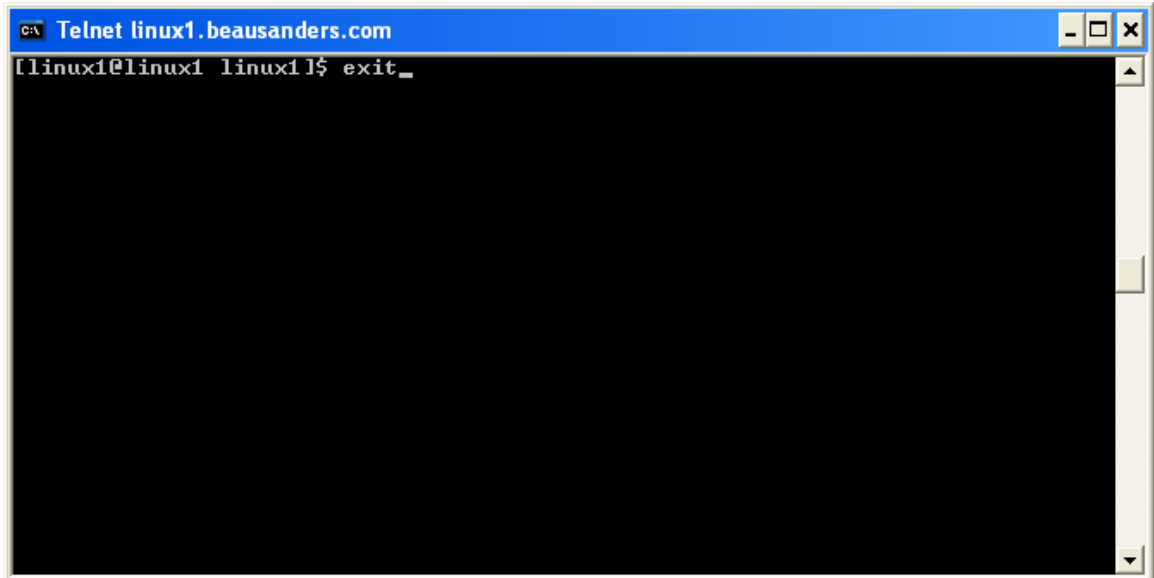
```
C:\> Telnet linux1.beausanders.com

[[linux1@linux1 linux1]$ help | more
GNU bash, version 2.05b.0(1)-release (i386-redhat-linux-gnu)
These shell commands are defined internally.  Type 'help' to see this list.
Type 'help name' to find out more about the function 'name'.
Use 'info bash' to find out more about the shell in general.
Use 'man -k' or 'info' to find out more about commands not in this list.

A star (*) next to a name means that the command is disabled.

%[DIGITS | WORD] [&]          << expression >>
. filename                    :
[ arg... ]                    [[ expression ]]
alias [-p] [name[=value] ... ]  bg [job_spec]
bind [-lpsPUS] [-m keymap] [-f fi break [n]
builtin [shell-builtin [arg ...]] case WORD in [PATTERN [| PATTERN]].
cd [-L|-P] [dir]              command [-pUv] command [arg ...]
compgen [-abdefgjkusv] [-o option complete [-abdefgjkusv] [-pr] [-o
continue [n]                  declare [-afFirtx] [-p] name[=valu
dirs [-clpv] [+N] [-N]        disown [-h] [-ar] [jobspec ...]
echo [-neE] [arg ...]        enable [-pnds] [-a] [-f filename]
eval [arg ...]                exec [-cl] [-a name] file [redirec
exit [n]                       export [-nf] [name[=value] ...] or
false                          fc [-e ename] [-nrl] [first] [last
fg [job_spec]                  for NAME [in WORDS ... ;] do COMMA
--More--
```

6. Once you have completed your Telnet session, exit Telnet by entering **exit** at the command prompt and press Enter. Click the X in the top right corner of the window to close the command prompt window.



```
C:\> Telnet linux1.beausanders.com

[[linux1@linux1 linux1]$ exit_
```